

Here come the critters! Yep, we're finishing out Summer 2024...

Shiloh Run News

Published Quarterly in Madison, Alabama by the Shiloh Run Home Owner's Association

For stories/ input contact hoaboard@shilohrun.com or write us at

P.O. Box 130, Madison, AL 35758

Have a service you'd like to advertise? It's free for HOA members!

**SPECIAL
SUMMER
SAFETY
ISSUE**

Shiloh Run HOA is a chartered organization with a goal of building community and supporting families.

Visit us on **FACEBOOK:**

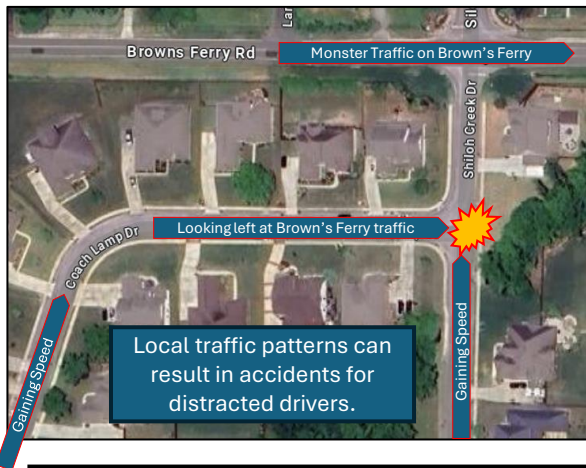
Or SECURE Homepage: <https://shilohrunhoa.com/>

Prevent an Accident Waiting to Happen: Yield Means Yield

With school in full swing, everyone is in a rush to get students out the door, grab that to-go cup of coffee, and get on the road. Unfortunately, traffic patterns in Madison haven't caught up with population increases, and that means TRAFFIC, during both morning and afternoon rush hours. Brown's Ferry is a chokepoint, especially at the stoplight-intersection with Sullivan Street (by Kroger/ Culver's). As a result, residents of Shiloh Run have to push their way into a line of cars on Brown's Ferry.

It will be a while before the City of Madison addresses this traffic flow, but it has caused a secondary concern right within our neighborhood: As residents focus on the traffic on Brown's Ferry, they are blowing through the yield sign at the intersection of Shiloh Creek Drive and Coach Lamp Drive. The potential for a crash at this intersection is significant – as residents head up Shiloh Creek Drive's long straightaway they gain speed while focused on the 'line of Cars', and similarly drivers approaching from Coach Lamp Drive look LEFT at traffic, not RIGHT where other drivers are approaching. Adding to the mess: EVERYTHING is rushed during rush hour, that hot cup of coffee won't fit in your cup holder, and you just got a text from your kid who missed the school bus – distractions are everywhere!

Take a deep breath, ready yourself for the day ahead....and look both ways. Its better for everyone, and it will keep your work day from "taking a turn for the worse".



Don't get blindsided at this intersection – be sure to look both ways!

E-LAWN

FALL IS COMING

Leaves are ready to fall but we're here to fight back contact us and we can help!

CEO of E-Lawn

Fall 2024

Remember CALL

Want to see your ad here? Advertising is free for neighborhood entrepreneurs under the age of 18!

BLOCTOBER Fest is Back!

The 5 W's:

Who: Shiloh Run Residents & families

What: Block party, Games, Food & Drinks

When: 13th of September, starting around 6:30PM.

Where:

Why: Enjoy end of summer with your neighbors!



This will be our 6th bi-annual Shiloh Run Block Party, and if you've missed the previous ones, we'd love to see you there! Food & drinks are provided (to include adult beverages), and you are welcome to bring outdoor games, a chair, and even family pets (on a leash please)

See you there!

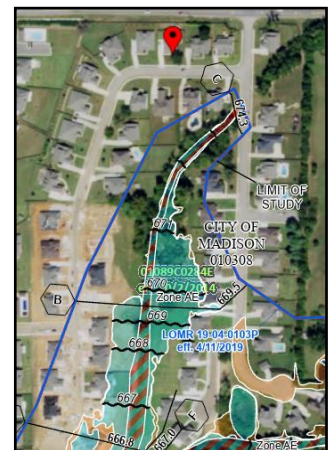
Know the Flow of Flood Zones

Alabama is no stranger to heavy rains in winter and spring, and though Shiloh Run has well-designed drainage, ground level saturation can raise water tables and even make driving a bit perilous as water evacuates.

Also worth noting: flooding isn't covered by home insurance policies, and it's the most common & costly natural disaster in the U.S. — just a single inch of flood water in a home can cause upwards of \$25,000 in damage, according to FEMA. Are you/ should you be covered?

Check here for flood zoning:

<https://www.fema.gov/cis/AL.html>



Neighborhood Projects are Still Plugging Along, Still Need YOU

The Shiloh Run HOA is still seeking volunteers to support our current list of projects. We've listed to projects, descriptions, and anticipated budgets below. Want to make a difference? Call/ email us and sign up.* To be sure, the projects established by SRHOA will get done, but that's a solid "eventually" unless we can find some much-needed assistance. Being a project lead means you get to plan the effort, to include developing a schedule, working within the agreed-upon budget, and ensuring the project is completed to an established standard. SRHOA will work with you to frame the project parameters.

Project Number/ Name/ Description

Project Number/ Name/ Description	Budget	Started
01: Entry Way Lighting: Install 2 nd set of "Shiloh Run" solar sign lights (left side as you enter)	\$100	2023
02: Brown's Ferry Sidewalk: Work with contractor to design/ build sidewalk from Shiloh Run entry through to Willow Creek entry	up to \$8K	2024
03: Retention Pond Repair: Remove (hire contractor?) old barbed wire and clear brush to revive water flow through retention pond at end of Shiloh Creek Drive	\$1K	2024
04: Lamp Post + Sidewalk Repair: Be the "squeaky wheel" with Madison City to ensure our lamps stay upright and our sidewalks stay flat and safe for pedestrians (ongoing)	\$0	2021

***Volunteer Guidelines:** We gladly accept volunteers of all shapes & sizes! We'll match the project to the volunteer, and we welcome enterprising teenagers, Scouts performing community projects, or even bored adults! Contact [marc](#)

Residual/ Ongoing SRHOA Work (covered, but volunteers welcome)

SRHOA Webpage Management	Complaint Resolution Team
Architectural Review Board	Quarterly Newsletter Editorial Team
Fall Block Party Planning Team	Spring Block Party Planning Team
Treasurer/ Budgetary Management	Common Area Landscaping Mgmt Team
Madison City Interaction Team	Area Beautification Team

Fire Fighters Know Shiloh Run by Name: Is That Good?

In the past three years (from 2021 to present), we've had at least an annual visit from the Madison City Fire Department, which is significant since Shiloh Run has only 31 houses. Thankfully, most events have been minor & resolved quickly, but since a home is likely the biggest investment we'll ever make (and homes are made of inherently flammable materials), it's good to know the basics of fire safety. We reached out to firefighter [redacted] for some pointers, and he highlighted the following:

- > **Unattended burners, stoves, & grills** are the #1 cause of fires. Watch proximity to flammables.
- > Equipment: Overloaded **extension cords + space heaters** = DANGER, and **Lithium batteries** fail spectacularly if overheated/damaged. If these items show signs of wear, dispose of them.
- > A home's **fuse panel** is a fire-prevention device. Ensure yours is working properly, and if a fuse pops, be sure to find the reason and put it right. *And don't forget those smoke detector batteries!*
- > **Candles** are great for ambience, but they can also be a cause of fires if left unattended.



Next mentioned that "Pet Safe" stickers on your front door let firefighters know that pets need to be rescued from a burning home (he has two dogs himself). On fires, he says, "People are always surprised when it happens to them, and its nearly always preventable," says [redacted] "Focusing on these areas hits the most preventable fires."

Know Where to Go: 911 will get emergency services quickly, but what about prevention?

Home Safety Assessment:

<https://www.madisonal.gov/forms.aspx?FID=91>

CPR Training Classes:

<https://www.madisonal.gov/1129/CPR>

HOA Fees: It All Works Out!

Truth: the current SRHOA Leadership is not heavy handed on HOA fees. Our philosophy: we would rather be good neighbors than debt collectors. However, fee collection is part of our HOA's legally binding covenant, so a sale of any home within Shiloh Run requires payment of all back fees prior to sale. Realtors are bound by this law, but if finances are tight, homeowners have flexibility to smartly defer. We just ask that you don't do it indefinitely :o)

Questions? Contact the SRHOA President: Marc

HOA Budget as of August 2024

For 2024, 26% paid	Current Budget
For 2023, 58% paid	Debits: \$5450
For 2022, 90% paid	Credits: \$5400
For 2021, 87% paid	Balance: \$13,030

We ask that HOA Fees be paid by **May 15th** annually – Thanks!

Shiloh Run Home Owner's Association Fees Payment Voucher

Fiscal Year:

I want to volunteer to help the HOA

YES NO

Name: _____

Address: _____

Preferred Email: _____

Amount of HOA fee payment: \$

Instructions: Submit voucher plus a personal check made out to "Shiloh Run HOA" and drop it with xxx. You'll receive a receipt/ email confirmation once your payment is recorded. Retroactive payments gladly accepted. Annual HOA Fee is \$300. *SRHOA is working to make fee payment electronic!* (well, we're trying...)